

# PRODUCT CATALOG



**KETER TIRE**  
USA





## Drive the New World!

Keter (pronounced like Better), is the Hebrew word for "Crown", it can also mean "Top" or "Crest". The Keter Corporation was founded in 2009 with the vision, and mission, to be widely recognized as one of the Top Tire Suppliers in Tire Industry.

Over the past decade, Keter's **Customer Centric Philosophy** has earned the reputation of a different kind of Tire Supplier. One that is very accommodating and easy to do business with. **We are a Global Product Sourcing Enterprise with a very simple business model that allows us to address the unique needs of our individual Customers.** Our Customers see us not only as a strategic source for tires, and related products, but also as a trusted partner who is committed as much to their success, as to our own.

Keter offers an extensive product line up in passenger, light truck and commercial truck products including the NeoTerra line which was specifically designed and developed to meet the demands of the US market.

### NeoTerra

The NeoTerra brand offers some of the most Technologically Advanced products available. Focused on a balance between **Performance, Durability and Safety**, and delivered at a value price point.

NeoTerra products are produced at a brand new, state of the art, facility.

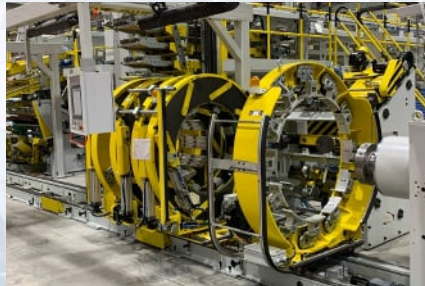
- **Advanced technology**
- **Proven quality, performance and durability**
- **Environmentally responsible**
- **Outstand warranty and satisfaction guarantee**

Wherever the road takes you, it's our mission to help advance your journey. We will be there with you as you drive your new worlds.

Drive Well and Safe Travels,

**Rick Phillips**, CEO

# NEOTERRA



NeoTerra Brand is produced in world **most advanced** manufacturing facility with three fundamental principles:

- Safety is in everything we do and we leverage the most advanced process and technology to improve users safety.
- Relentless pursue of quality and rigorous process control to deliver reliable product performance.
- Green, clean and environmentally responsible.

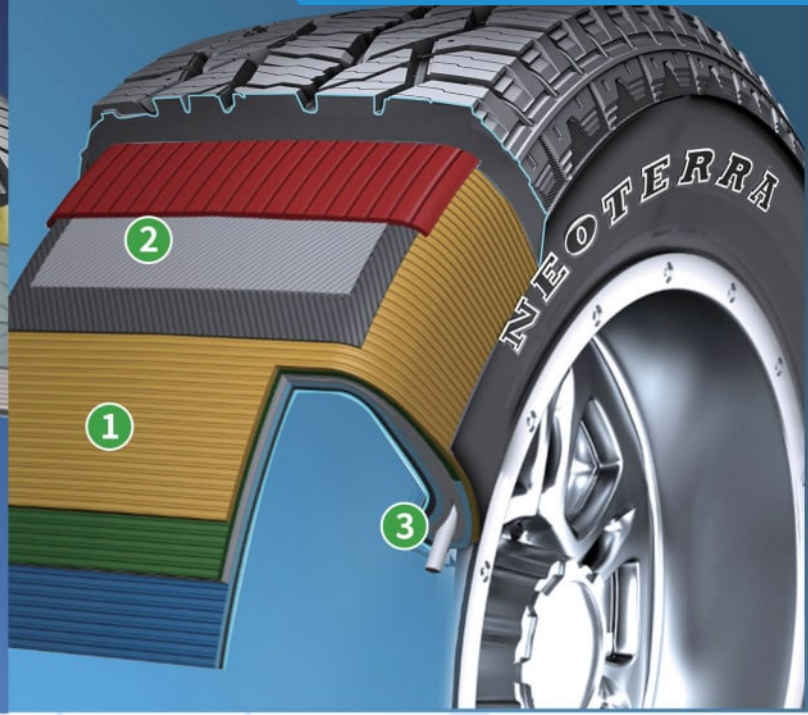


Every NeoTerra Product Comes With a **MONEY BACK GUARANTEE.**

## PASSENGER



## LIGHT TRUCK



### NEOTERRA PASSENGER & LIGHT TRUCK TIRES

Specially formulated compound developed specifically for North America road conditions. Outstanding handling and guaranteed long tread life.

- Patented tread patterns designed specifically for the North America market delivers enhanced driving experience and reliability.
- Manufactured at with state of the art technology in world class production facilities around the world with rigorous quality control and consistency.
- Passenger tire construction employs a seamless bead bundle for increased ride control and superior handling.
- Light truck construction features:
  - 1 Triple ply polyester design with high sidewall turn up.
  - 2 Two steel body ply's and two full nylon cap belts covering tread and shoulder area
  - 3 Larger bead with extra sidewall rubber produce robust performance combined with an ultra comfortable ride.





## NEOTERRA COMMERCIAL TRUCK TIRES

---

4-belt casing construction for guaranteed readability and durable performance.

- Dual-compound tread with specially formulated compounds allow for longer wear and lower rolling resistance.
- Wide body construction for an expanded footprint on the road to improve stability and lateral handling.
- Developed and Manufactured utilizing the most advanced technologies in the tire industry.



## PASSENGER



### NEOTOUR

Performance  
Touring

PAGES  
5-6



### NEOSPORT

Ultra High  
Performance

PAGES  
7-8



## LIGHT TRUCK



### NEOTRAC

Highway  
Terrain

PAGES  
9-10



### NEOTRAX

All Terrain

PAGES  
11-12

### NEOMAX RT

Rugged  
Terrain

PAGES  
13-14

### NEOMAX MT

Mud Terrain

PAGES  
15-16





### Long Tread Life

Special formulated compound with enhanced shoulder construction ensures even wear and long last tread life.

### All Weather Traction

Advanced tread design with four wide long grooves provides excellent wet and dry performance in all weather conditions.

### Quiet & Comfort Ride

Optimized tread pitch width and alignment design provides an exceptional quiet and comfortable ride.

ROLLING RESISTANCE

WET PERFORMANCE

QUIETNESS

COMFORT

TREAD LIFE



## UTQG:600AA

SIZE	LOAD INDEX / SPEED SYMBOL	STANDARD RIM	OVERALL DIAMETER [MM / IN.]	SECTION WIDTH [MM / IN.]	TREAD DEPTH [MM/32NDS]	PRODUCT CODE
185/60R15	84 / H	5½J	603 / 23.7	189 / 7.4	7.6 / 9.6	6959613722806
185/65R15	88 / H	5½J	621 / 24.4	189 / 7.4	7.6 / 9.6	6959613722776
195/50R15	82 / V	6J	577 / 22.7	201 / 7.9	7.4 / 9.3	6959613730191
195/55R15	85 / V	6J	595 / 23.4	201 / 7.9	7.4 / 9.3	6959613730207
195/60R15	88 / H	6J	615 / 24.2	201 / 7.9	7.6 / 9.6	6959613722745
195/65R15	91 / H	6J	635 / 25.0	201 / 7.9	7.6 / 9.6	6959613722721
205/60R15	91 / H	6J	627 / 24.7	209 / 8.2	7.6 / 9.6	6959613722813
205/65R15	94 / V	6J	647 / 25.5	209 / 8.2	8.0 / 10.1	6959613722752
205/70R15	96 / H	6J	710 / 28.0	209 / 8.2	8 / 10.1	6959613731808
215/60R15	94 / H	6½J	639 / 25.2	221 / 8.7	8 / 10.1	6959613731815
215/65R15	100XL / H	6½J	661 / 26.0	221 / 8.7	8 / 10.1	6959613731822
215/70R15	98 / H	6½J	683 / 26.9	221 / 8.7	8.0 / 10.1	6959613722790
195/60R16	89 / V	6J	640 / 25.2	201 / 7.9	7.6 / 9.6	6959613731754
195/65R16	92 / H	6J	660 / 26.0	201 / 7.9	7.6 / 9.6	6959613731761
205/55R16	91 / V	6½J	632 / 24.9	214 / 8.4	7.6 / 9.6	6959613722707
205/60R16	92 / V	6J	652 / 25.7	209 / 8.2	7.6 / 9.6	6959613722769
205/65R16	95 / V	6J	672 / 26.5	209 / 8.2	8.0 / 10.1	6959613722837
215/55R16	93 / V	7J	642 / 25.3	226 / 8.9	7.6 / 9.6	6959613722844
215/60R16	95 / V	6½J	664 / 26.1	221 / 8.7	8.0 / 10.1	6959613722714
215/65R16	98 / H	6½J	686 / 27.0	221 / 8.7	8.0 / 10.1	6959613722783
215/70R16	100 / H	6½J	708 / 27.9	221 / 8.7	8 / 10.1	6959613731778
225/60R16	98 / H	6½J	676 / 26.6	228 / 9.0	8.0 / 10.1	6959613722738
225/70R16	103 / H	6½J	722 / 28.4	228 / 9.0	8 / 10.1	6959613731785
235/70R16	106 / H	7J	736 / 29.0	240 / 9.4	8 / 10.1	6959613731792
215/55R17	98XL / V	7J	668 / 26.3	226 / 8.9	7.6 / 9.6	6959613729300
215/60R17	96 / H	6½J	690 / 27.2	221 / 8.7	8.0 / 10.1	6959613722875
225/50R17	98XL / V	7J	658 / 25.9	233 / 9.2	7.6 / 9.6	6959613729317
225/65R17	102 / H	6½J	724 / 28.5	228 / 9.0	8.0 / 10.1	6959613729324
235/60R17	102 / H	7J	714 / 28.1	240 / 9.4	8.0 / 10.1	6959613722943
235/65R17	108XL / H	7J	738 / 29.1	240 / 9.4	8.0 / 10.1	6959613729447



### Superior Responsiveness

Proven asymmetric tread provides precise, race-inspired handling on wet or dry conditions.

### Cornering Stability

Specifically enhanced shoulder design maintain even tread pressure to improve grip while cornering.

### Ultra Quiet Ride

Advanced tread block pattern and optimized pitch alignment greatly reduce excessive road noise.

ROLLING RESISTANCE

WET PERFORMANCE

QUIETNESS

COMFORT

TREAD LIFE



SIZE	LOAD INDEX / SPEED SYMBOL	STANDARD RIM	OVERALL DIAMETER [MM / IN.]	SECTION WIDTH [MM / IN.]	TREAD DEPTH [MM/32NDS]	PRODUCT CODE
205/40ZR17	84XL / W	7½J	596 / 23.5	212 / 8.3	7.6 / 12.6	6959613731983
205/50ZR17	93XL / W	6½J	638 / 25.1	214 / 8.4	7.6 / 12.6	6959613723636
215/45ZR17	91XL / W	7J	626 / 24.6	213 / 8.4	7.6 / 16.0	6959613723506
215/50ZR17	95XL / W	7J	648 / 25.5	226 / 8.9	7.6 / 16.0	6959613723599
215/55ZR17	94 / W	7J	668 / 26.3	226 / 8.9	7.6 / 16.0	6959613723667
225/45ZR17	94XL / W	7½J	634 / 25.0	225 / 8.9	7.6 / 16.0	6959613723544
225/50ZR17	98XL / W	7J	658 / 25.9	233 / 9.2	7.6 / 16.0	6959613723674
225/55ZR17	97 / W	7J	680 / 26.8	233 / 9.2	7.6 / 16.0	6959613723490
225/60R17	99 / H	6½J	702 / 27.6	228 / 9.0	7.8 / 16.0	6959613729461
235/45ZR17	97XL / W	8J	644 / 25.4	236 / 9.3	7.6 / 16.0	6959613723681
235/55R17	103XL / V	7½J	690 / 27.2	245 / 9.6	7.6 / 16.0	6959613731082
245/45ZR17	99XL / W	8J	652 / 25.7	243 / 9.6	7.6 / 16.0	6959613731099
225/40ZR18	92XL / Y	8J	637 / 25.1	230 / 9.1	7.6 / 16.0	6959613723513
225/45ZR18	95XL / W	7½J	659 / 25.9	225 / 8.9	7.6 / 16.0	6959613723520
235/40ZR18	95XL / Y	8½J	645 / 25.4	241 / 9.5	7.6 / 16.0	6959613731105
235/45ZR18	98XL / Y	8J	669 / 26.3	236 / 9.3	7.6 / 16.0	6959613723612
235/50ZR18	97 / W	7½J	693 / 27.3	245 / 9.6	7.6 / 16.0	6959613723582
235/60R18	107XL / H	7J	739 / 29.1	240 / 9.4	7.8 / 16.0	6959613729478
245/40ZR18	97XL / W	8½J	653 / 25.7	248 / 9.8	7.6 / 16.0	6959613723643
245/45ZR18	100XL / W	8J	677 / 26.7	243 / 9.6	7.6 / 16.0	6959613723568
225/35ZR19	88XL / W	8J	641 / 25.2	230 / 9.1	7.6 / 16.0	6959613731990
235/35ZR19	91XL / W	8½J	647 / 25.5	241 / 9.5	7.6 / 16.0	6959613731280
235/40ZR19	96XL / W	8½J	671 / 26.4	241 / 9.5	7.6 / 16.0	6959613729423
245/40ZR19	98XL / Y	8½J	679 / 26.7	248 / 9.8	7.6 / 16.0	6959613731235
255/40ZR19	100XL / W	9J	687 / 27.0	260 / 10.2	7.6 / 16.0	6959613731242
225/35ZR20	90XL / Y	8J	666 / 26.2	230 / 9.1	7.6 / 16.0	6959613723537
245/35ZR20	95XL / Y	8½J	680 / 26.8	248 / 9.8	7.6 / 16.0	6959613723483
245/40ZR20	99XL / W	8½J	704 / 27.7	248 / 9.8	7.6 / 16.0	6959613731259
245/45ZR20	99 / Y	8J	728 / 28.7	243 / 9.6	7.6 / 16.0	6959613723575
245/50ZR20	102 / W	7½J	754 / 29.7	253 / 10.0	7.6 / 9.6	6959613701832
275/40ZR20	106XL / Y	9½J	728 / 28.7	278 / 10.9	7.8 / 9.8	6959613723476
265/35ZR22	102XL / Y	9½J	745 / 29.3	271 / 10.7	8.0 / 10.1	6959613723551
305/40ZR22	114XL / W	11J	803 / 31.6	313 / 12.3	8.0 / 10.1	6959613723629
305/35ZR24	112XL / W	11J	824 / 32.4	313 / 12.3	8.0 / 10.1	6959613723605
275/25ZR26	98XL / W	10J	798 / 31.4	283 / 11.1	8.0 / 10.1	6959613701757



### Long Tread Life

Durable tread compound with reinforced construction stands up to the challenge of heavy loads and extend tread life.

### All Weather Performance

Four deep aqua grooves and full-depth sipes provide enhanced traction and wet performance in all weather conditions.

### Quiet & Comfort Ride

Optimized tread design offers a quiet and comfortable ride.

ROLLING RESISTANCE

WET PERFORMANCE

QUIETNESS

COMFORT

TREAD LIFE



SIZE	PLY RATING/ LOAD RANGE	LOAD INDEX / SPEED SYMBOL	STANDARD RIM	OVERALL DIAMETER [MM / IN.]	SECTION WIDTH [MM / IN.]	TREAD DEPTH [MM/32NDS]	PRODUCT CODE
235/75R15		109XL / T	6½J	733 / 28.9	235 / 9.3	8.5 / 10.7	6959613730993
215/70R16		100 / H	6½J	708 / 27.9	221 / 8.7	8.5 / 10.7	6959613723124
225/70R16		103 / T	6½J	722 / 28.4	228 / 9.0	8.5 / 10.7	6959613723179
LT225/75R16	10 / E	115/112 / S	6J	750 / 29.5	223 / 8.8	10.0 / 12.6	6959613723087
225/75R16		104 / H	6J	744 / 29.3	223 / 8.8	8.5 / 10.7	6959613731921
235/70R16		106 / T	7J	736 / 29.0	240 / 9.4	8.5 / 10.7	6959613723148
245/70R16		107 / T	7J	750 / 29.5	248 / 9.8	8.5 / 10.7	6959613723285
LT245/75R16	10 / E	120/116 / S	7J	780 / 30.7	248 / 9.8	10.0 / 12.6	6959613723070
255/70R16		111 / T	7½J	764 / 30.1	260 / 10.2	8.5 / 10.7	6959613723308
265/70R16		112 / T	8J	778 / 30.6	272 / 10.7	8.5 / 10.7	6959613723100
265/75R16		116 / T	7½J	804 / 31.7	267 / 10.5	8.5 / 10.7	6959613723209
225/65R17		102 / H	6½J	724 / 28.5	228 / 9.0	8.5 / 10.7	6959613723162
235/65R17		108XL / H	7J	738 / 29.1	240 / 9.4	8.5 / 10.7	6959613723063
245/65R17		107 / T	7J	750 / 29.5	248 / 9.8	8.5 / 10.7	6959613731006
245/70R17		110 / T	7J	776 / 30.6	248 / 9.8	8.5 / 10.7	6959613731013
255/70R17		112 / T	7½J	790 / 31.1	260 / 10.2	8.5 / 10.7	6959613731914
265/65R17		112 / T	8J	776 / 30.6	272 / 10.7	8.5 / 10.7	6959613731020
265/70R17		115 / T	8J	804 / 31.7	272 / 10.7	8.5 / 10.7	6959613723094
235/60R18		103 / T	7J	739 / 29.1	240 / 9.4	8.5 / 10.7	6959613731136
235/65R18		106 / H	7J	763 / 30.0	240 / 9.4	8.5 / 10.7	6959613731938
245/60R18		105 / T	7J	751 / 29.6	248 / 9.8	8.5 / 10.7	6959613731143
255/55R18		105 / H	8J	737 / 29.0	265 / 10.4	8.5 / 10.7	6959613731945
255/65R18		111 / T	7½J	789 / 31.1	260 / 10.2	8.5 / 10.7	6959613731952
255/70R18		113 / T	7½J	815 / 32.1	260 / 10.2	8.5 / 10.7	6959613731969
265/60R18		110 / H	8J	775 / 30.5	272 / 10.7	8.5 / 10.7	6959613731150
265/65R18		114 / T	8J	801 / 31.5	272 / 10.7	8.5 / 10.7	6959613723155
265/70R18		116 / T	8J	829 / 32.6	272 / 10.7	8.5 / 10.7	6959613731167
275/65R18		116 / T	8J	815 / 32.1	279 / 11.0	8.5 / 10.7	6959613731174
255/60R19		109 / H	7½J	789 / 31.1	260 / 10.2	8.5 / 10.7	6959613731976
275/55R20		117XL / H	8½J	810 / 31.9	284 / 11.2	8.5 / 10.7	6959613723117
275/60R20		115 / T	8J	838 / 33.0	279 / 11.0	8.5 / 10.7	6959613723131





### Superb Traction

Open tread design with advanced compound provides superb all-season traction and versatile all-terrain performance.

### Enhanced Toughness

The LT sizes constructed with true 3-belt and high strength steel package for enhanced toughness and rugged strength.

### Off-Road Handling

Wraparound shoulder design delivers desired off-road handling and enhanced performance.

ROLLING RESISTANCE

WET PERFORMANCE

QUIETNESS

COMFORT

TREAD LIFE

SIZE	PLY RATING/ LOAD RANGE	LOAD INDEX / SPEED SYMBOL	STANDARD RIM	OVERALL DIAMETER [MM / IN.]	SECTION WIDTH [MM / IN.]	TREAD DEPTH [MM/32NDS]	PRODUCT CODE
LT235/75R15	6 / C	104/101 / S	6½J	733 / 28.9	235 / 9.3	12.7 / 16.0	6959613731907
LT215/85R16	10 / E	115/112 / Q	6J	778 / 30.6	216 / 8.5	12.7 / 16.0	6959613722509
LT225/75R16	10 / E	115/112 / Q	6J	750 / 29.5	223 / 8.8	12.7 / 16.0	6959613722431
LT235/85R16	10 / E	120/116 / Q	6½J	812 / 32.0	235 / 9.3	12.7 / 16.0	6959613722417
LT245/75R16	10 / E	120/116 / Q	7J	780 / 30.7	248 / 9.8	12.7 / 16.0	6959613722349
245/75R16		111 / T	7J	774 / 30.5	248 / 9.8	10.3 / 13.0	6959613722554
LT255/70R16	10 / E	120/117 / R	7½J	770 / 30.3	260 / 10.2	12.7 / 16.0	6959613722622
LT265/70R16	10 / E	121/118 / R	8J	798 / 31.4	279 / 11.0	12.7 / 16.0	6959613722325
265/70R16		112 / T	8J	778 / 30.6	272 / 10.7	10.3 / 13.0	6959613722448
LT265/75R16	10 / E	123/120 / Q	7½J	810 / 31.9	267 / 10.5	12.7 / 16.0	6959613722363
LT285/75R16	10 / E	126/123 / Q	8J	840 / 33.1	286 / 11.3	12.7 / 16.0	6959613722370
LT315/75R16	10 / E	127/124 / Q	8½J	878 / 34.6	313 / 12.3	12.7 / 16.0	6959613731891
LT235/80R17	10 / E	120/117 / Q	6½J	808 / 31.8	235 / 9.3	12.7 / 16.0	6959613731044
LT245/70R17	10 / E	119/116 / R	7J	750 / 29.5	248 / 9.8	12.7 / 16.0	6959613731051
245/70R17		110 / T	7J	776 / 30.6	248 / 9.8	10.3 / 13.0	6959613731884
LT245/75R17	10 / E	121/118 / Q	7J	800 / 31.5	248 / 9.8	12.7 / 16.0	6959613731068
LT265/70R17	10 / E	121/118 / S	8J	810 / 31.9	272 / 10.7	12.7 / 16.0	6959613722356
265/70R17		115 / T	8J	804 / 31.7	272 / 10.7	10.3 / 13.0	6959613731037
LT285/70R17	10 / E	121/118 / S	8½J	838 / 33.0	292 / 11.5	12.7 / 16.0	6959613722332
LT265/70R18	10 / E	124/121 / S	8J	835 / 32.9	272 / 10.7	12.7 / 16.0	6959613722653
265/70R18		116 / T	8J	829 / 32.6	272 / 10.7	10.3 / 13.0	6959613722493
LT275/65R18	10 / E	123/120 / Q	8J	821 / 32.3	279 / 11.0	12.7 / 16.0	6959613722387
LT275/65R18	8 / D	121/119 / Q	8J	821 / 32.3	279 / 11.0	12.7 / 16.0	6959613733918
LT275/70R18	10 / E	125/122 / S	8J	849 / 33.4	279 / 11.0	12.7 / 16.0	6959613722400
LT285/75R18	10 / E	129/126 / Q	8J	891 / 35.1	286 / 11.3	12.7 / 16.0	6959613722424
LT265/60R20	10 / E	121/118 / S	8J	826 / 32.5	272 / 10.7	12.7 / 16.0	6959613731181
LT275/55R20	10 / E	120/117 / S	8½J	816 / 32.1	284 / 11.2	12.7 / 16.0	6959613722455
275/55R20		117 XL / T	8½J	810 / 31.9	284 / 11.2	10.3 / 13.0	6959613722318
LT275/65R20	10 / E	126/123 / S	8J	872 / 34.3	279 / 11.0	12.7 / 16.0	6959613722394
LT285/55R20	10 / E	122/119 / S	9J	828 / 32.6	297 / 11.7	12.7 / 16.0	6959613722547
LT285/60R20	10 / E	125/122 / R	8½J	856 / 33.7	292 / 11.5	12.7 / 16.0	6959613722677
LT285/65R20	10 / E	127/124 / Q	8½J	884 / 34.8	292 / 11.5	12.7 / 16.0	6959613722462
LT305/55R20	12 / F	125/122 / Q	9½J	844 / 33.2	316 / 12.4	12.7 / 16.0	6959613731198
285/45R22		114XL / H	9½J	815 / 32.1	285 / 11.2	10.3 / 13.0	6959613731266





**Balanced Traction and Comfortability**

Innovative hybrid tread design provides the perfect balance between off-road performance and on-road comfortable ride.

**Robust Off-Road Performance**

Presicely engineered tread design with enhanced casing package ensures outstanding off-road performance where needed most.

**Aggressive But Smooth**

Optimized block pattern with special pitch alignment provides a smooth on-road ride.



# NEOTERRA

SIZE	PLY RATING/ LOAD RANGE	LOAD INDEX / SPEED SYMBOL	STANDARD RIM	OVERALL DIAMETER [MM / IN.]	SECTION WIDTH [MM / IN.]	TREAD DEPTH [MM/32NDS]	PRODUCT CODE
31x10.50R15LT	6 / C	109 / Q	8½J	781 / 30.7	268 / 10.6	13.5 / 17.0	6959613723018
LT265/75R16	10 / E	123/120 / Q	7½J	810 / 31.9	267 / 10.5	13.5 / 17.0	6959613723049
LT285/75R16	10 / E	126/123 / Q	8J	840 / 33.1	286 / 11.3	13.5 / 17.0	6959613723056
LT285/70R17	10 / E	121/118 / Q	8½J	838 / 33.0	292 / 11.5	13.5 / 17.0	6959613729539
LT305/65R17	12 / F	121/118 / Q	9J	828 / 32.6	311 / 12.2	13.5 / 17.0	6959613731075
LT315/70R17	12 / F	121/118 / Q	9½J	880 / 34.6	323 / 12.7	13.5 / 17.0	6959613730733
33x12.50R18LT	12 / F	122 / Q	10J	832 / 32.8	318 / 12.5	13.5 / 17.0	6959613722950
35x12.50R18LT	12 / F	128 / Q	10J	883 / 34.8	318 / 12.5	13.5 / 17.0	6959613722967
LT275/70R18	10 / E	125/122 / Q	8J	849 / 33.4	279 / 11.0	13.5 / 17.0	6959613729560
LT285/65R18	10 / E	125/122 / Q	8½J	833 / 32.8	292 / 11.5	13.5 / 17.0	6959613729577
LT305/60R18	12 / F	126/123 / Q	9J	823 / 32.4	311 / 12.2	13.5 / 17.0	6959613731112
LT305/70R18	12 / F	128/125 / Q	9J	885 / 34.8	311 / 12.2	13.5 / 17.0	6959613731129
LT325/65R18	12 / F	127/124 / Q	9½J	879 / 34.6	331 / 13.0	13.5 / 17.0	6959613731877
33x12.50R20LT	12 / F	119 / Q	10J	832 / 32.8	318 / 12.5	13.5 / 17.0	6959613722974
35x12.50R20LT	12 / F	125 / Q	10J	883 / 34.8	318 / 12.5	13.5 / 17.0	6959613722981
37x12.50R20LT	12 / F	128 / Q	11J	934 / 36.8	345 / 13.6	13.5 / 17.0	6959613730757
LT265/60R20	10 / E	121/118 / Q	8J	826 / 32.5	272 / 10.7	13.5 / 17.0	6959613731204
LT275/65R20	10 / E	126/123 / Q	8J	866 / 34.1	279 / 11.0	13.5 / 17.0	6959613701511
LT285/55R20	10 / E	122/119 / Q	9J	828 / 32.6	297 / 11.7	13.5 / 17.0	6959613701528
LT305/55R20	12 / F	125/122 / Q	9½J	850 / 33.5	316 / 12.4	13.5 / 17.0	6959613701535
LT325/60R20	12 / F	126/123 / Q	9½J	898 / 35.4	331 / 13.0	13.5 / 17.0	6959613730740
33x12.50R22LT	12 / F	114 / Q	10J	832 / 32.8	318 / 12.5	13.5 / 17.0	6959613722998
35x12.50R22LT	12 / F	121 / Q	10J	883 / 34.8	318 / 12.5	13.5 / 17.0	6959613723001





### Maximum Traction

Advanced tread compound and aggressive block design ensures maximum traction and grip in severe off-road conditions.

### Tough and Durable

Hardworking wraparound tread with enhanced steel belt package construction optimizes sidewall traction and puncture resistance in deep mud, sand and rocks.

### Confident Handling

Self-cleaning tread and shoulder area guarantees consistent traction and grip power.

ROLLING RESISTANCE

WET PERFORMANCE

QUIETNESS

COMFORT

TREAD LIFE

# NEOTERRA

SIZE	PLY RATING/ LOAD RANGE	LOAD INDEX / SPEED SYMBOL	STANDARD RIM	OVERALL DIAMETER [MM / IN.]	SECTION WIDTH [MM / IN.]	TREAD DEPTH [MM/32NDS]	PRODUCT CODE
31x10.50R15LT	6 / C	109 / Q	8½J	775 / 30.5	268 / 10.6	15.5 / 19.5	6959613731839
33x12.50R15LT	6 / C	108 / Q	10J	826 / 32.5	318 / 12.5	15.5 / 19.5	6959613731846
35x12.50R15LT	6 / C	113 / Q	10J	877 / 34.5	318 / 12.5	15.5 / 19.5	6959613731853
LT245/75R16	10 / E	120/116 / Q	7J	780 / 30.7	248 / 9.8	15.5 / 19.5	6959613701672
LT285/75R16	10 / E	126/123 / Q	8J	840 / 33.1	286 / 11.3	15.5 / 19.5	6959613723896
LT305/70R16	12 / F	128/125 / Q	9J	834 / 32.8	311 / 12.2	15.5 / 19.5	6959613730764
33x12.50R17LT	12 / F	121 / Q	10J	832 / 32.8	318 / 12.5	15.5 / 19.5	6959613730771
35x12.50R17LT	12 / F	121 / Q	10J	883 / 34.8	318 / 12.5	15.5 / 19.5	6959613730788
37x12.50R17LT	8 / D	124 / Q	10J	934 / 36.8	318 / 12.5	15.5 / 19.5	6959613723841
37x13.50R17LT	10 / E	121 / Q	11J	928 / 36.5	345 / 13.6	15.5 / 19.5	6959613731860
33x12.50R18LT	12 / F	122 / Q	10J	832 / 32.8	318 / 12.5	15.5 / 19.5	6959613730795
35x12.50R18LT	12 / F	128 / Q	10J	883 / 34.8	318 / 12.5	15.5 / 19.5	6959613730801
LT285/65R18	10 / E	125/122 / Q	8½J	833 / 32.8	292 / 11.5	15.5 / 19.5	6959613723933
33x12.50R20LT	12 / F	119 / Q	10J	832 / 32.8	318 / 12.5	15.5 / 19.5	6959613730818
35x12.50R20LT	12 / F	125 / Q	10J	883 / 34.8	318 / 12.5	15.5 / 19.5	6959613730825
37x13.50R20LT	12 / F	128 / Q	11J	934 / 36.8	345 / 13.6	15.5 / 19.5	6959613730832
LT305/55R20	12 / F	125/122 / Q	9½J	844 / 33.2	316 / 12.4	15.5 / 19.5	6959613731211
LT325/60R20	12 / F	126/123 / Q	9½J	898 / 35.4	331 / 13.0	15.5 / 19.5	6959613731228
33x12.50R22LT	12 / F	114 / Q	10J	832 / 32.8	318 / 12.5	15.5 / 19.5	6959613724008
35x12.50R22LT	12 / F	121 / Q	10J	883 / 34.8	318 / 12.5	15.5 / 19.5	6959613730849
37x13.50R22LT	12 / F	128 / Q	11J	928 / 36.5	345 / 13.6	15.5 / 19.5	6959613731273
37x13.50R24LT	12 / F	124 / Q	11J	934 / 36.8	345 / 13.6	15.5 / 19.5	6959613730856



## COMMERCIAL TRUCK



### **AP201**

Regional  
All Position

PAGES  
19-20

### **AP221**

Specialty  
All Position

PAGES  
21-22

### **CD301**

Closed  
Shoulder  
Drive

PAGES  
23-24

### **OD311**

Open  
Shoulder  
Drive

PAGES  
25-26

### **OD321**

All Season  
Drive

PAGE  
27





## **CT401**

Commercial  
Trailer

PAGES  
28

## **MS231**

Mixed  
Service  
All Position

PAGE  
29

## **MS241**

Mixed Service  
Wide-base  
All Position

PAGE  
30

## **MS321**

Mixed  
Service  
Drive

PAGE  
31

## **MS331**

Mixed  
Service  
Drive

PAGE  
32





### **Long Service Life**

Advanced wear-resistant compound with dual-layer tread offers long service life.

### **Wide Footprint**

Premium 5-rib design with wide footprint offers slow, uniform wear and enhanced handling.

### **All-Weather Traction**

Special groove design and rib edge sipes enhances traction in all weather conditions.

### **Guaranteed Retreadability**

Premium casing construction promotes consistent footprint and guaranteed retreadability.

# NEOTERRA

SIZE	PR / LR	LOAD INDEX / SPEED SYMBOL	STANDARD RIM	OVERALL DIAMETER [MM / IN.]	SECTION WIDTH [MM / IN.]	SINGLE LOAD [KG/LBS]	DUAL LOAD [KG/LBS]	PRESSURE [KPA / PSI]	TREAD DEPTH [MM / 32NDS]	PRODUCT CODE
11R22.5	14 / G	144/142 L	8.25	1065 / 41.9	279 / 11.0	2800 / 6175	2650 / 5840	720 / 105	14.3 / 18.0	6959613724237
11R22.5	16 / H	148/145 L	8.25	1054 / 41.5	279 / 11.0	3150 / 6940	2900 / 6390	850 / 123	14.3 / 18.0	6959613724244
295/75R22.5	14 / G	144/141 M	8.25	1014 / 39.9	298 / 11.7	2800 / 6175	2575 / 5675	760 / 110	14.3 / 18.0	6959613724299
295/75R22.5	16 / H	146/143 M	8.25	1014 / 39.9	298 / 11.7	3000 / 6610	2725 / 6005	830 / 120	14.3 / 18.0	6959613724305
315/80R22.5	20 / L	157/154 L	9.00	1076 / 42.4	312 / 12.3	4125 / 9090	3750 / 8270	900 / 130	15.9 / 20.0	6959613724312
11R24.5	14 / G	146/143 L	8.25	1116 / 43.9	279 / 11.0	3000 / 6610	2725 / 6005	720 / 105	14.3 / 18.0	6959613724251
11R24.5	16 / H	149/146 L	8.25	1104 / 43.5	279 / 11.0	3250 / 7160	3000 / 6610	830 / 120	14.3 / 18.0	6959613724268
285/75R24.5	14 / G	144/141 L	8.25	1050 / 41.3	283 / 11.1	2800 / 6175	2575 / 5675	760 / 110	14.3 / 18.0	6959613724275
285/75R24.5	16 / H	147/144 L	8.25	1050 / 41.3	283 / 11.1	3075 / 6780	2800 / 6175	830 / 120	14.3 / 18.0	6959613724282





### **Long Miles to Removal**

Innovative tread compound provide enhanced high-scrub resistance for long miles to removal.

### **Superb Traction**

Optimized tread block geometry with special groove sipes offers superb traction and quick response on wet or slippery roads.

### **Enhanced Protection**

Wide enhanced shoulder increased protection against curb damage and irregular wear.

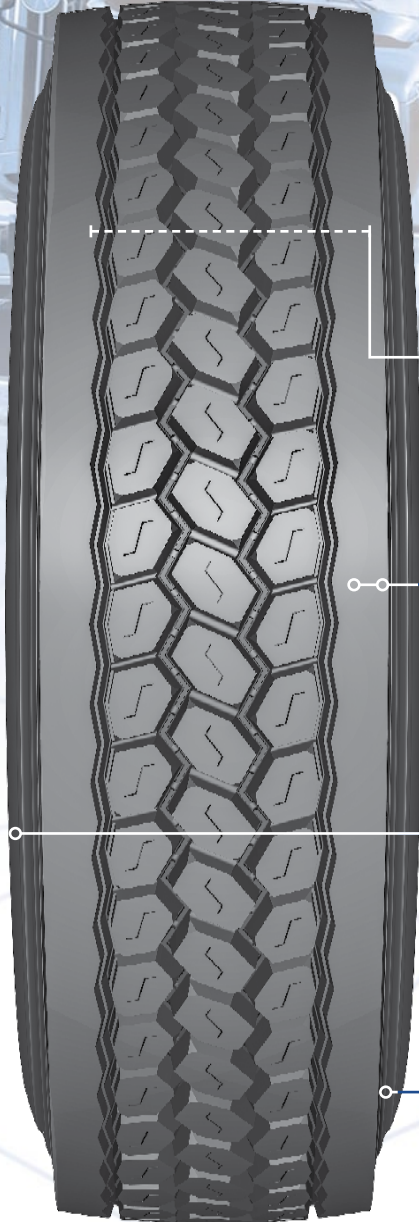
### **Guaranteed Retreadability**

Premium casing construction provides toughness and durability for guaranteed retreadability.

# NEOTERRA

SIZE	PR / LR	LOAD INDEX / SPEED SYMBOL	STANDARD RIM	OVERALL DIAMETER [MM / IN.]	SECTION WIDTH [MM / IN.]	SINGLE LOAD [KG/LBS]	DUAL LOAD [KG/LBS]	PRESSURE [KPA / PSI]	TREAD DEPTH [MM / 32NDS]	PRODUCT CODE
215/75R17.5	16 / H	127/124 M	6.00	767 / 30.2	211 / 8.3	1750 / 3860	1600 / 3525	830 / 120	12.8 / 16.1	6959613724329
215/75R17.5	16 / H	135/133 J	6.00	767 / 30.2	211 / 8.3	2180 / 4805	2060 / 4540	850 / 125	12.8 / 16.1	6959613732096
235/75R17.5	18 / J	143/141 J	6.75	797 / 31.4	233 / 9.2	2725 / 6010	2575 / 5675	850 / 125	12.8 / 16.1	6959613724343
225/70R19.5	14 / G	128/126 L	6.75	811 / 31.9	226 / 8.9	1800 / 3970	1700 / 3750	760 / 110	14.3 / 18.0	6959613724336
245/70R19.5	16 / H	135/133 M	7.50	839 / 33.0	248 / 9.8	2180 / 4805	2060 / 4540	830 / 120	15.0 / 18.9	6959613724350
255/70R22.5	16 / H	140/137 M	7.50	930 / 36.6	255 / 10.0	2500 / 5510	2300 / 5070	830 / 120	15.0 / 18.9	6959613724367
275/70R22.5	16 / H	148/145 M	8.25	958 / 37.7	276 / 10.9	3150 / 6940	2900 / 6390	900 / 130	15.9 / 20.0	6959613724374





### **Long Original Mileage**

Deep tread with innovative compound promotes long original mileage.

### **Uniform Wear**

Closed shoulder design provides uniform wear throughout the life of the tire

### **Enhanced Handling**

Aggressive design with wide footprint delivers enhanced handling and brake response.

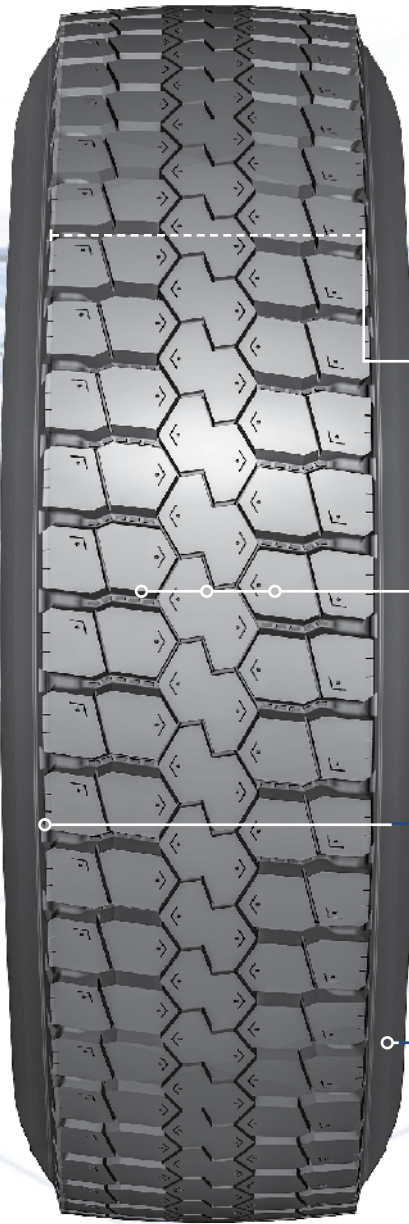
### **Guaranteed Retreadability**

Premium casing construction provides toughness and durability for guaranteed retreadability.

# NEOTERRA

SIZE	PR / LR	LOAD INDEX / SPEED SYMBOL	STAN- DARD RIM	OVERALL DIAMETER [MM / IN.]	SECTION WIDTH [MM / IN.]	SINGLE LOAD [KG/LBS]	DUAL LOAD [KG/LBS]	PRESSURE [KPA / PSI]	TREAD DEPTH [MM / 32NDS]	PRODUCT CODE
11R22.5	14 / G	144/142 L	8.25	1065 / 41.9	279 / 11.0	2800 / 6175	2650 / 5840	720 / 105	21.4 / 27.0	6959613724084
11R22.5	16 / H	146/143 L	8.25	1065 / 41.9	279 / 11.0	3000 / 6610	2725 / 6005	830 / 120	21.4 / 27.0	6959613724091
295/75R22.5	14 / G	144/141 L	8.25	1020 / 40.2	298 / 11.7	2800 / 6175	2575 / 5675	760 / 110	21.4 / 27.0	6959613724152
295/75R22.5	16 / H	146/143 L	8.25	1020 / 40.2	298 / 11.7	3000 / 6610	2725 / 6005	830 / 120	21.4 / 27.0	6959613724145
11R24.5	14 / G	146/143 L	8.25	1116 / 43.9	279 / 11.0	3000 / 6610	2725 / 6005	720 / 105	21.4 / 27.0	6959613724107
11R24.5	16 / H	149/146 L	8.25	1116 / 43.9	279 / 11.0	3250 / 7160	3000 / 6610	830 / 120	21.4 / 27.0	6959613724114
285/75R24.5	14 / G	144/141 L	8.25	1056 / 41.6	283 / 11.1	2800 / 6175	2575 / 5675	760 / 110	22.5 / 28.3	6959613724121
285/75R24.5	16 / H	147/144 L	8.25	1050 / 41.3	283 / 11.1	3075 / 6780	2800 / 6175	830 / 120	22.5 / 28.3	6959613724138





### Long Service Life

Innovative tread compound with advanced tread design delivers wear resistance and scrubbing resistance for long service life.

### Superior Traction

Open shoulder design delivers enhanced traction and acceleration in all weather conditions.

### Enhanced Handling

Aggressive design with wide footprint delivers enhanced handling and superior brake response.

### Guaranteed Retreadability

Premium casing construction provides toughness and durability for guaranteed retreadability.

SIZE	PR / LR	LOAD INDEX / SPEED SYMBOL	STANDARD RIM	OVERALL DIAMETER [MM / IN.]	SECTION WIDTH [MM / IN.]	SINGLE LOAD [KG/LBS]	DUAL LOAD [KG/LBS]	PRESSURE [KPA / PSI]	TREAD DEPTH [MM / 32NDS]	PRODUCT CODE
225/70R19.5	14 / G	128/126 L	6.75	811 / 31.9	226 / 8.9	1800 / 3970	1700 / 3750	760 / 110	15.0 / 18.9	6959613702686
245/70R19.5	16 / H	135/133 L	7.50	839 / 33.0	248 / 9.8	2180 / 4805	2060 / 4540	830 / 120	15.9 / 20.0	6959613702693
11R22.5	14 / G	144/142 L	8.25	1065 / 41.9	279 / 11.0	2800 / 6175	2650 / 5840	720 / 105	20.6 / 26.0	6959613724176
11R22.5	16 / H	146/143 L	8.25	1065 / 41.9	279 / 11.0	3000 / 6610	2725 / 6005	830 / 120	20.6 / 26.0	6959613724183
255/70R22.5	16 / H	140/137 L	7.50	930 / 36.6	255 / 10.0	2500 / 5510	2300 / 5070	830 / 120	17.5 / 22.0	6959613724213
295/75R22.5	14 / G	144/141 L	8.25	1020 / 40.2	298 / 11.7	2800 / 6175	2575 / 5675	760 / 110	20.6 / 26.0	6959613724220
295/75R22.5	16 / H	146/143 L	8.25	1020 / 40.2	298 / 11.7	3000 / 6610	2725 / 6005	830 / 120	20.6 / 26.0	6959613729201
11R24.5	14 / G	146/143 L	8.25	1116 / 43.9	279 / 11.0	3000 / 6610	2725 / 6005	720 / 105	20.6 / 26.0	6959613724190
11R24.5	16 / H	149/146 L	8.25	1116 / 43.9	279 / 11.0	3250 / 7160	3000 / 6610	830 / 120	20.6 / 26.0	6959613724206
285/75R24.5	14 / G	144/141 L	8.25	1056 / 41.6	283 / 11.1	2800 / 6175	2575 / 5675	760 / 110	22.5 / 28.3	6959613729225
285/75R24.5	16 / H	147/144 L	8.25	1050 / 41.3	283 / 11.1	3075 / 6780	2800 / 6175	830 / 120	22.5 / 28.3	6959613729232





## Ultimate Traction

Dynamic tread design with premium performance compound promotes ultra traction needed for all applications in harsh weather conditions.

## Powerful Grip

Unique 3D sipes and optimized block design add extra gripping power in diverse weather conditions.

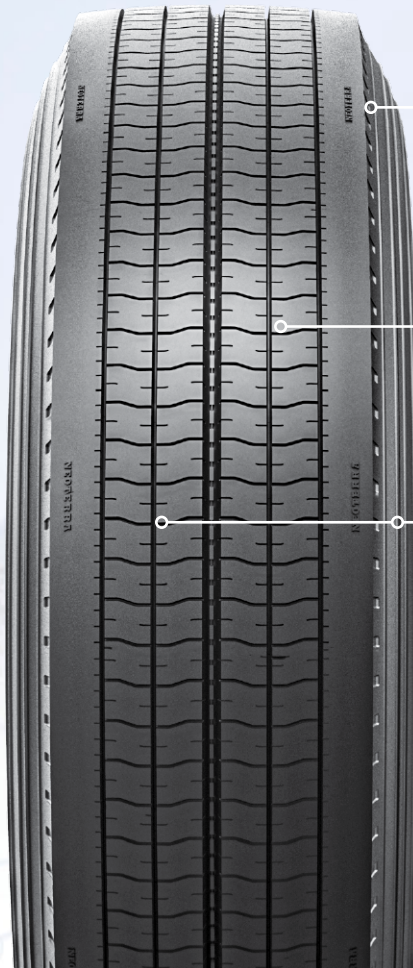
## Added Traction Performance

Unique groove design and open shoulder increases cleaning ability for added traction performance.

## Guaranteed Retreadability

Premium casing construction provides toughness and durability for guaranteed retreadability.

SIZE	PR / LR	LOAD INDEX / SPEED SYMBOL	STANDARD RIM	OVERALL DIAMETER [MM / IN.]	SECTION WIDTH [MM / IN.]	SINGLE LOAD [KG/LBS]	DUAL LOAD [KG/LBS]	PRESSURE [KPA / PSI]	TREAD DEPTH [MM / 32NDS]	PRODUCT CODE
11R22.5	14 / G	144/142 L	8.25	1065 / 41.9	279 / 11.0	2800 / 6175	2650 / 5840	720 / 105	22.5 / 28.3	6959613701863
11R22.5	16 / H	146/143 L	8.25	1065 / 41.9	279 / 11.0	3000 / 6610	2725 / 6005	830 / 120	22.5 / 28.3	6959613724459
295/75R22.5	14 / G	144/141 L	8.25	1020 / 40.2	298 / 11.7	2800 / 6175	2575 / 5675	760 / 110	22.5 / 28.3	6959613701887
295/75R22.5	16 / H	146/143 L	8.25	1020 / 40.2	298 / 11.7	3000 / 6610	2725 / 6005	830 / 120	22.5 / 28.3	6959613724473
11R24.5	14 / G	146/143 L	8.25	1116 / 43.9	279 / 11.0	3000 / 6610	2725 / 6005	720 / 105	22.5 / 28.3	6959613701870
11R24.5	16 / H	149/146 L	8.25	1116 / 43.9	279 / 11.0	3250 / 7160	3000 / 6610	830 / 120	22.5 / 28.3	6959613724466



### Low Rolling Resistance

Special tread compound with shallow non-skid offers low rolling resistance.

### Enhanced Toughness and Even Wear

Solid shoulder rib with unique pressure distribution grooves delivers enhanced toughness and promotes long, even wear.

### Wet Weather Stability

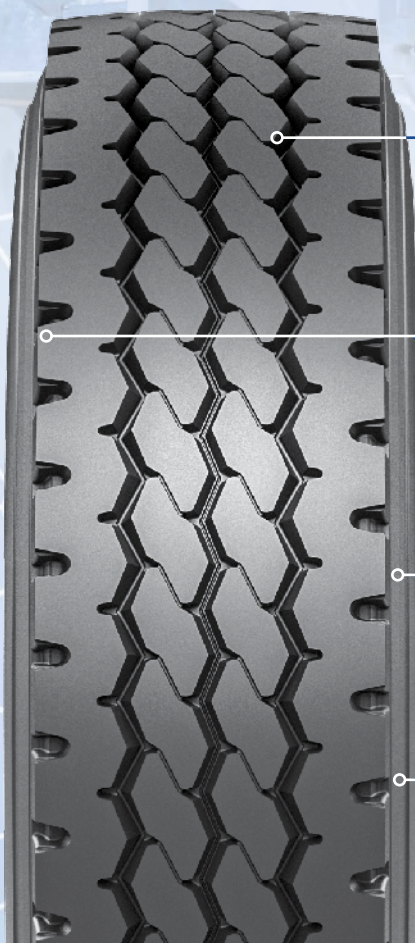
Wide center groove delivers superior water evacuation for increased stability in wet road conditions.

### Guaranteed Retreadability

Premium casing construction promotes multiple retreads.

SIZE	PR / LR	LOAD INDEX / SPEED SYMBOL	STANDARD RIM	OVERALL DIAMETER [MM / IN.]	SECTION WIDTH [MM / IN.]	SINGLE LOAD [KG/LBS]	DUAL LOAD [KG/LBS]	PRESSURE [KPA / PSI]	TREAD DEPTH [MM / 32NDS]	PRODUCT CODE
11R22.5	14 / G	144/142 M	8.25	1054 / 41.5	279 / 11.0	2800 / 6175	2650 / 5840	720 / 105	11.7 / 14.7	6959613724381
11R22.5	16 / H	146/143 M	8.25	1054 / 41.5	279 / 11.0	3000 / 6610	2725 / 6010	830 / 120	11.7 / 14.7	6959613724398
295/75R22.5	14 / G	144/141 M	8.25	1014 / 39.9	298 / 11.7	2800 / 6175	2575 / 5675	760 / 110	11.7 / 14.7	6959613724435
295/75R22.5	16 / H	146/143 M	8.25	1014 / 39.9	298 / 11.7	3000 / 6610	2725 / 6005	830 / 120	11.7 / 14.7	6959613724442
11R24.5	14 / G	146/143 L	8.25	1116 / 43.9	279 / 11.0	3000 / 6610	2725 / 6010	720 / 105	11.7 / 14.7	6959613724404
11R24.5	16 / H	149/146 L	8.25	1116 / 43.9	279 / 11.0	3250 / 7160	3000 / 6610	830 / 120	11.7 / 14.7	6959613724411





### Long Service Life

Premium chip/cut resistant compound offers long service life in on and off road applications.

### Improved Stability

Optimized tread design with wider footprint improves stability and traction on various driving surfaces.

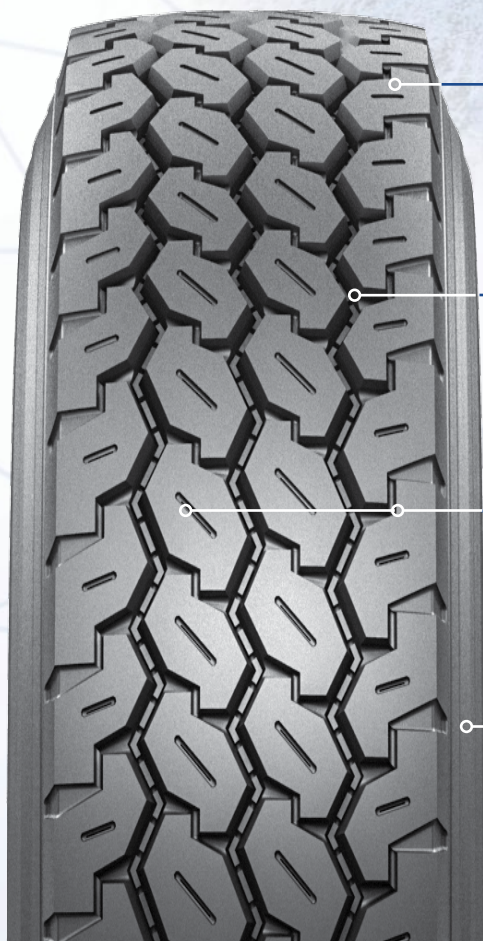
### Adaptable Flexibility

Special bead bundle package allows more flexibility in dealing with road obstacles.

### Guaranteed Retreadability

Premium enhanced casing construction offers toughness and outstanding performance through retread cycle.

SIZE	PR / LR	LOAD INDEX / SPEED SYMBOL	STANDARD RIM	OVERALL DIAMETER [MM / IN.]	SECTION WIDTH [MM / IN.]	SINGLE LOAD [KG/LBS]	DUAL LOAD [KG/LBS]	PRESSURE [KPA / PSI]	TREAD DEPTH [MM / 32NDS]	PRODUCT CODE
11R22.5	16 / H	146/143 L	8.25	1065 / 41.9	279 / 11.0	3000 / 6610	2725 / 6010	850 / 123	18.3 / 23.0	6959613724480
11R22.5	14 / G	144/142 L	8.25	1065 / 41.9	279 / 11.0	2800 / 6175	2650 / 5840	720 / 105	18.3 / 23.0	6959613702761
255/70R22.5	16 / H	140/137 L	7.50	930 / 36.6	255 / 10.0	2500 / 5510	2300 / 5070	830 / 120	15.9 / 20.0	6959613702730
275/70R22.5	16 / H	148/145 M	8.25	958 / 37.7	276 / 10.9	3150 / 6940	2900 / 6390	900 / 130	17.5 / 22.0	6959613702747
315/80R22.5	20 / L	161/154 K	9.00	1076 / 42.4	312 / 12.3	4625 / 10200	3750 / 8270	900 / 130	18.3 / 23.0	6959613724503
11R24.5	16 / H	149/146 L	8.25	1104 / 43.5	279 / 11.0	3250 / 7160	3000 / 6610	830 / 120	18.3 / 23.0	6959613724497
11R24.5	14 / G	146/143 L	8.25	1116 / 43.9	279 / 11.0	3000 / 6610	2725 / 6010	720 / 105	18.3 / 23.0	6959613702778



### Enhanced Mileage

Advanced severe service compound resists cut, chips and tears and offers enhanced mileage.

### All-Season Traction

Deep convex groove with biting edges provides all-season traction on wet, snowy or dry roads.

### Improved Handling

Optimized block pattern promotes excellent strength and improved handling.

### Guaranteed Retreadability

Premium enhanced casing construction offers toughness and outstanding performance through retread cycle.

SIZE	PR / LR	LOAD INDEX / SPEED SYMBOL	STANDARD RIM	OVERALL DIAMETER [MM / IN]	SECTION WIDTH [MM / IN]	SINGLE LOAD [KG/LBS]	DUAL LOAD [KG/LBS]	PRESSURE [KPA / PSI]	TREAD DEPTH [MM / 32NDS]	PRODUCT CODE
385/65R22.5	20 / L	160 L	11.75	1072 42.2	389 / 15.3	4500 / 9920	4500 / 9920	900 / 130	18.3 / 23.0	6959613724527
425/65R22.5	20 / L	165 K	12.25	1124 44.3	422 / 16.6	5150 / 11400	5150 / 11400	830 / 120	18.3 / 23.0	6959613724534





### Extended Service Life

Dependable cut/chip resistance compound promotes extended service life.

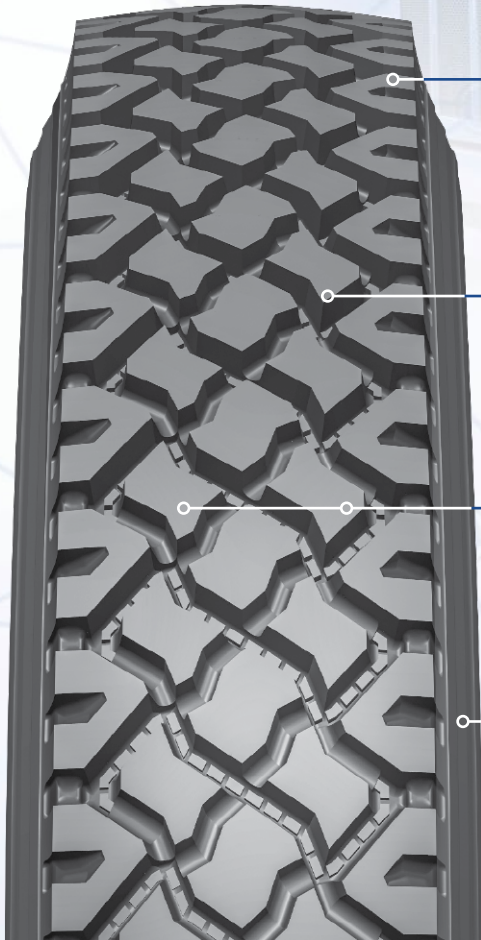
### Excellent Traction

Rugged lug design with deep non skid offers excellent traction in severe off-highway service.

### Guaranteed Retreadability

Premium enhanced casing construction with deep undertread provides excellent retreadability.

SIZE	PR / LR	LOAD INDEX / SPEED SYMBOL	STANDARD RIM	OVERALL DIAMETER [MM / IN.]	SECTION WIDTH [MM / IN.]	SINGLE LOAD [KG/LBS]	DUAL LOAD [KG/LBS]	PRESSURE [KPA / PSI]	TREAD DEPTH [MM / 32NDS]	PRODUCT CODE
11R22.5	16 / H	146/143 L	8.25	1065 / 41.9	279 / 11.0	3000 / 6610	2725 / 6005	830 / 120	23.8 / 30.0	6959613724558
11R22.5	14 / G	144/142 L	8.25	1065 / 41.9	279 / 11.0	2800 / 6175	2650 / 5840	720 / 105	23.8 / 30.0	6959613702785
315/80R22.5	20 / L	161/154 K	9.00	1076 / 42.4	312 / 12.3	4625 / 10200	3750 / 8270	900 / 130	23.8 / 30.0	6959613729188
11R24.5	16 / H	149/146 L	8.25	1104 / 43.5	279 / 11.0	3250 / 7160	3000 / 6610	830 / 120	23.8 / 30.0	6959613724565
11R24.5	14 / G	146/143 L	8.25	1116 / 43.9	279 / 11.0	3000 / 6610	2725 / 6010	720 / 105	23.8 / 30.0	6959613702792



### Extended Service Life

Premium severe service compound offers outstanding cut/chip resistance and extended service life in tough driving conditions.

### Ultimate Off-Road Traction

Extra deep 33/32nd aggressive self-cleaning tread helps resist mud or snow buildup and promote ultimate traction.

### Enhanced Stability

Optimized block design with in-between bridges allows enhanced stability and constant gripping power.

### Guaranteed Retreadability

Premium enhanced casing construction with deep undertread provides excellent retreadability.

SIZE	PR / LR	LOAD INDEX / SPEED SYMBOL	STANDARD RIM	OVERALL DIAMETER [MM / IN.]	SECTION WIDTH [MM / IN.]	SINGLE LOAD [KG/LBS]	DUAL LOAD [KG/LBS]	PRESSURE [KPA / PSI]	TREAD DEPTH [MM / 32NDS]	PRODUCT CODE
11R22.5	16 / H	146/143 L	8.25	1065 / 41.9	279 / 11.0	3000 / 6610	2725 / 6005	830 / 120	26.2 / 33.0	6959613724572
11R22.5	14 / G	144/142 L	8.25	1065 / 41.9	279 / 11.0	2800 / 6175	2650 / 5840	720 / 105	26.2 / 33.0	6959613702808
11R24.5	16 / H	149/146 L	8.25	1104 / 43.5	279 / 11.0	3250 / 7160	3000 / 6610	830 / 120	26.2 / 33.0	6959613724589
11R24.5	14 / G	146/143 L	8.25	1116 / 43.9	279 / 11.0	3000 / 6610	2725 / 6010	720 / 105	26.2 / 33.0	6959613702815



# NEOTERRA PASSENGER/LIGHT TRUCK TIRE STANDARD WARRANTY

Keter Tire USA stands behind and warrants every new NeoTerra brand Passenger and Light Truck tires purchased from an authorized dealer in United States.

### SATISFACTION ASSURANCE

All NeoTerra passenger and light truck tires are covered by the 30-day “Satisfaction Assurance”. If for any reason you are not completely satisfied with your new set of tires within 30 days of date of purchase, and no more than 2/32nd of treadwear, you may return these tires to your authorized NeoTerra dealer for a full refund of the purchase price or exchange them for a different set of NeoTerra tires of same design. Mounting and balancing are free of charge for replacement of tires.

You have the option to exchange for another set of NeoTerra tires of different design, just pay the cost difference from the original purchase price if the cost of replacement tires is higher, plus applicable taxes.

This Satisfaction Assurance applies to the original new set of manufactured passenger and Light Truck tires purchased. Satisfaction Assurance replacement tires are not covered under this program.

### SATISFACTION ASSURANCE ADMINISTRATION

Within thirty (30) days from the date of purchase, or the first 2/32nds of treadwear as measured in the fastest wearing groove, simply return your tires to the authorized NeoTerra dealer where your tires were purchased. The original sales receipt is required as proof-of-purchase. Reason for dissatisfaction must be explained to the dealer (i.e., appearance, ride, handling, etc.) and noted on the adjustment claim form.

### 4 YEAR REPLACEMENT WARRANTY

Keter Tire USA warrants every new NeoTerra Passenger and Light Truck tire for defects in workmanship and materials through the life of the original tread. Original Tread Life is defined as, from a newly installed product down to 2/32nd of measurable tread, or within four (4) years from the date of purchase or date of manufacture without proof of purchase. If any NeoTerra should incur a defect in workmanship or materials, Keter Tire USA will replace the tire with another tire of same design at a prorated cost. Within the first 10% of treadwear the tire is replaced at no charge.

### MILEAGE WARRANTIES

In addition to the provisions of limited warranty for covered conditions, the NeoTerra tires listed below are protected against premature wear-out for up to four (4) years or the mileage indicated in the matrix below, whichever occurs first:

NeoTour HP	60,000 Miles
NeoSport UHP	50,000 Miles
NeoTrac HT	50,000 Miles
NeoTrax AT	40,000 Miles
NeoTrax RT	NA
NeoTrax MT	NA

If any NeoTerra tire, covered under this mileage warranty, wears evenly down to a tread depth of 2/32nd in less than the promised mileage and in less than four (4) years from dates of manufacture, Keter Tire USA will credit the owner a pro-rated amount based on the actual mileage toward the purchase of a new NeoTerra tire. Costs for mounting, balancing and other service-related costs are not included.

The owner is expected to care for their NeoTerra tires as follows:

- The tires should be balanced at installation and should be rebalanced, periodically and as necessary.
- Tires should be rotated at least every 6,000 miles or as recommended by the vehicle manufacturer.
- The wheels on the vehicle should be properly aligned per the vehicle specs.
- Failure to rotate tires as recommended could void this warranty.
- The vehicle should be properly aligned, either front end or all 4 wheels, as necessary.

### ROAD HAZARD WARRANTY

Every NeoTerra passenger and light truck tire is covered for non-repairable damage caused by road hazards under normal on-road driving conditions such as puncture, snag, cut, bruise or impact break, etc., within the first 10% of the original tread life and within one (1) year from the date of purchase, whichever comes first. It will be replaced free of charge with a comparable NeoTerra tire of same design.

A tire is not covered if it is considered repairable according to Rubber Manufacturers Association (RMA) standards. All Exclusions listed in this Standard Warranty below void this Road Hazard Warranty. Conditions and coverage are subject to change at any time without notice.

It is the owner’s obligation to follow the guidelines in this Standard Warranty to be eligible for Road Hazard Warranty to ensure maximum performance from the NeoTerra product. All the Exclusions listed in this Standard Warranty below may void this Road Hazard Warranty. Conditions and coverage are subject to change at any time.

Installation, Balance and Taxes and subsequent vehicle damage are not included in this road hazard warranty.

### NEOTERRA STANDARD WARRANTY EXCLUSIONS

- NeoTerra standard warranty applies only to the original purchaser and the original vehicle on which tires are installed. The warranty is not assignable to the subsequent purchasers or vehicles.
- The standard warranty is expressly for tires purchased from an authorized NeoTerra dealer in the United States and Canada and used on vehicles registered and operated in the United States and Canada.
- The standard warranty covers tires for four (4) years from date of manufacture or date of purchase as determined by

---

the DOT/Serial number or the original sales receipt.

- The standard warranty does not cover tires damaged due to misuse, abuse or accident listed below:
  - Misapplication, inappropriate mounting / dismounting, tire/ wheel imbalance or improper repair.
  - Uneven or rapid wear caused by mechanical irregularity in the vehicle such as wheel misalignment.
  - Racing, off-road use, under or over inflation, overloading.
  - Accident, chemical corrosion, alteration, vandalism, flat spotting due to improper storage or brake lock.
  - The addition of liquid, solid or gaseous materials other than air, nitrogen or carbon dioxide.
  - Minor cosmetic ozone or weather cracking.
- Other limitations included but not limited to the following:
  - Tire branded or marked “Non-Adjustable” (N/A) or “Blemished” (Blem), or previously adjusted.
  - Failure to rotate the tires as recommended voids the Mileage Promises.
  - Mileage Warranty on tires that cannot be rotated due to different sized tires will be 50% of the rate.
  - Mileage Warranty is excluded on tires used in commercial applications.
  - Road Hazard is excluded due to abuse or operating vehicle under severe off-road driving conditions.
  - Any tires with tread worn to less than 2/32” are considered out of warranty.
  - Tire in which D.O.T. identification number and/or brand name removed intentionally.
  - Ride complaints after 2/32” of tread wear will not be accepted.
  - Winter tires are designed to be used in winter months and should be removed in summer months.
- Loss of time or use, inconvenience, or any incidental or consequential damages except as prohibited by law.
- Out-of-balance or out-of-round condition is only allowed during the first 2/32” of the original tread.

## PROVISIONS

Keter Tire USA utilizes the latest technology to design and develop world class products. However, any tire, no matter how well constructed, may fail during operation or become unserviceable due to conditions beyond our control. This Warranty is in no way intended to represent that the failure of a NeoTerra product may not occur.

Keter Tire USA maintains the right to change or terminate this Standard Warranty program at any time without notice.

## HOW TO OBTAIN AN ADJUSTMENT

All claims must be presented to an authorized NeoTerra dealer.

A copy of the original purchase receipt is required.

Completed and sign the claim form provided by NeoTerra dealer.



# NEOTERRA COMMERCIAL TRUCK TIRE STANDARD WARRANTY

Keter Tire USA stands behind and warrants every new NeoTerra brand commercial truck tires purchased from an authorized dealer in United States.

You are eligible for the benefits of this warranty if you meet all the following criteria:

- You are the owner or authorized agent of the owner of new NeoTerra commercial truck tires.
- Your tires bear Department of Transportation (DOT) prescribed tire identification numbers.
- Your NeoTerra commercial truck tires have been used in accordance to the vehicle manufacturers specifications or Keter Tire USA's recommendations.

### SATISFACTION ASSURANCE

All NeoTerra commercial truck tires are covered by the 30-day “Satisfaction Assurance” warranty. If for any reason you are not completely satisfied with your new tires within 30 days from date of purchase, and no more than 2/32nd of treadwear, you may return these tires to your authorized NeoTerra dealer for a full refund of the purchase price or exchange them for a different set of NeoTerra tires. Mounting and balancing are free of charge for replacement of tires.

If you exchange for another set of NeoTerra tires of different design, just pay the cost difference from the original purchase price if the cost of replacement tires is higher, plus applicable taxes.

This Satisfaction Assurance warranty applies to the original new commercial truck tires purchased, up to a maximum of 24 tires per customer per calendar year. Satisfaction Assurance replacement tires are not covered under this program.

### SATISFACTION ASSURANCE ADMINISTRATION

Within thirty (30) days from the date of purchase, or the first 2/32nds of treadwear as measured in the fastest wearing groove, simply return your tires to the authorized NeoTerra dealer where your tires were purchased. The original sales receipt is required as proof-of-purchase. Reason for dissatisfaction must be explained to the dealer (i.e., appearance, ride, handling, etc.) and noted on the adjustment claim form. All Exclusions listed in this Standard Warranty below may void this Satisfaction Assurance Warranty. Conditions and coverage are subject to change at any time without notice.

### ROAD HAZARD WARRANTY

Every NeoTerra on-highway application commercial truck tire is covered for non-repairable damage caused by road hazards under normal driving conditions such as puncture, snag, cut, bruise or impact break, etc., within the first 25% of the original tread life and within sixty (60) days from the date of purchase, whichever comes first. It will be replaced free of charge with a comparable NeoTerra tire of same design.

A tire is not covered if it is considered repairable according to Rubber Manufacturers Association (RMA) standards.

It is the owner's obligation to follow the guidelines in this Standard Warranty to be eligible for Road Hazard Warranty to ensure maximum performance from the NeoTerra product. All the Exclusions listed in this Standard Warranty below may void this Road Hazard Warranty. Conditions and coverage are subject to change at any time.

### STANDARD LIMITED WARRANTY

If any NeoTerra commercial truck tire covered by this warranty becomes unserviceable for any reason (see exclusions) during the original tread life (calculated by the original new tire tread depth less 2/32” remaining tread depth at the fastest wearing groove on said tire), or within five (5) (or Six (6) years for Smartway verified products) from the date of manufacture. Keter Tire USA will credit the purchase on a prorated amount based on the usable tread remaining excluding FET.

- a. Submission of claims covered by this warranty constitutes adherence to the terms of this warranty as detailed herein.
- b. This warranty applies only to new first quality tires. Retread tires, blemished tires and road hazard damaged tires (see road hazard tire warranty) are specifically excluded.
- c. Adjustments for ride complaints, out of balance or out of round tires are excluded from this warranty if they are worn past 2/32” from the original usable tread of the new tire as measured in the fastest wearing groove.

### CASING WARRANTY

NeoTerra commercial truck tire casing are warranted for workmanship and material related conditions through the original, first and second retread or for a period of five (5) or six (6) years from date of manufacturer, whichever comes first. The life of the second retread is considered to end when the remaining tread reaches a measurable depth of 2/32” or less. If a NeoTerra commercial truck tire casing was removed from service due to a workmanship or material related condition, Keter Tire USA will issue a credit toward the purchase of a new NeoTerra Truck Tire as listed below:

Tire/Casing Size	Original Tread	1st Retread	2nd Retread	Warranty Period
11R22.5, 12R22.5, 11R24.5	\$70.00	\$50.00	\$40.00	6 YEARS
295/75R22.5, 285/75R24.5	\$70.00	\$50.00	\$40.00	6 YEARS
315/80R22.5	\$70.00	\$50.00	\$40.00	6 YEARS
9R22.5,10R22.5	\$40.00	\$30.00	\$10.00	5 YEARS
245, 255, 265, 275..R22.5	\$40.00	\$30.00	\$10.00	5 YEARS
385, 425, 44565R22.5	\$40.00	\$30.00	\$10.00	5 YEARS
ALL 17.5 & 19.5	\$20.00	\$10.00	\$10.00	5 YEARS

### EXCLUSIONS

1. Tires purchased and normally used outside the United States and Canada.
2. Tires purchased as used.
3. Tires which are misapplied due to improper fitment, insufficient Speed Rating, or Load Index, or undersized or oversized tires, use of an improper wheel, tire chain damage, misuse, tire spinning, negligence, tire alteration, or for racing or competition purposes.
4. Damage from incorrect mounting or dismounting of the tire, incorrect application, water or other material trapped inside the tire during mounting or failure to balance the tires.
5. Ride complaints after the first 2/32" of tread wear.
6. Tire damage due to Road Hazards, including, without limitation: Puncture, cut, impact break, stone drilling, bruise, bulge, snag, etc.

7. Insufficient or improper maintenance, including, without limitation: failure to rotate tires as recommended, wheel misalignment, worn suspension components, improper tire mounting or demounting, tire/wheel assembly imbalance, or other vehicle conditions, defects, or characteristics.
8. Tire damage due to contamination or degradation by petroleum products or other chemicals, fire or other externally generated heat, or water or other material trapped inside the tire during mounting or inflation.
9. Accident, chemical corrosion, tire alteration, willful abuse, or vandalism.
10. Rapid treadwear or wear-out.
11. Tires with weather cracking, which were manufactured five (5) or more years prior to presentation (6 years on SmartWay Verified products), are not covered.
12. Tires with unapproved sealant, balance, or other filler material that was not originally applied or inserted by the tire manufacturer.
13. Use of improper inner tube.
14. Tires improperly repaired or with repairs not conforming to U.S. Tire Manufacturers Association standards, or with section repairs, or with a self-vulcanizing plug only or patch only.
15. Tire disabled due to faulty retreading or retreading materials.
16. Cost of mounting and balancing service except as noted above.
17. Tires inflated with anything other than air or nitrogen.
18. Tires affected by flat spotting caused by brake lockup, improper transport, or storage.
19. Premature or irregular wear (a measured tread difference of 2/32" (1.6mm) or more across the tread on the same tire) due to vehicle mechanical deficiencies.
20. Any tires worn beyond the wear indicators (less than 2/32" remaining tread depth).
21. The cost of applicable federal, state, and local taxes.
22. Failure to follow any of the safety and maintenance recommendations or warnings contained in this publication.
23. Tire branded or marked "Non-Adjustable" (N /A) or previously adjusted
24. Loss of time or use, inconvenience, or any incidental or consequential damages.

#### TO OBTAIN WARRANTY COVERAGE

- a. You must present the tire to be adjusted to a current NeoTerra authorized dealer. Tires replaced on a warranty basis become the property of Keter Tire USA.
- b. Submitter must pay for taxes, fees or any additional services ordered at the time of warranty adjustment.
- c. Keter Tire claims should be submitted on our claim form (supplied by authorized dealer or you can download the form from our website), filled out and signed by you, the owner of the tire presented for adjustment, or your authorized agent.

#### FOR WARRANTY SERVICE ASSISTANCE OR INFORMATION

1. Please contact the nearest authorized NeoTerra Tire Dealer first
2. If additional assistance is required:-
  - Visit our website at [www.ketertiresusa.com](http://www.ketertiresusa.com)
  - E-mail Keter Tire Customer Service: [customerservice@ketertireusa.com](mailto:customerservice@ketertireusa.com)
  - Feel free to call us at 615-535-1358 or if you prefer
  - Write to: Customer Service, Keter Tire, USA 3401 Mallory Ln, Ste 200 Franklin, TN 37064

#### TO OBTAIN WARRANTY COVERAGE

A tire has delivered its full original tread life and the new tire coverage of this warranty ends when the tread wear indicators become visible, or five (5) years from the date of purchase (purchase receipt required) or date of manufacture (DOT) will be used. In the case of SmartWay verified products the warranty is extended to six (6) years from the date of purchase (purchase receipt required) or date of manufacture (DOT) will be used. Casings may continue to be warranted beyond the new tire coverage

#### SAFETY WARNINGS

Serious injury, property damage or death may result from:

- **TIRE FAILURE DUE TO UNDERINFLATION / OVERLOADING.** Follow the owner's manual or tire placard in vehicle.
- **TIRE FAILURE DUE TO EXCESSIVE HIGH SPEED.** Follow the owner's manual or tire placard in vehicle.
- **EXPLOSION OF TIRE / RIM ASSEMBLY DUE TO IMPROPER MOUNTING.** Only specially trained persons should mount tires.
- **FAILURE TO MOUNT RADIAL TIRES ON APPROVED RIMS.**
- **FAILURE TO DEFLATE SINGLE OR DUAL ASSEMBLIES COMPLETELY BEFORE DISMOUNTING.**
- **TIRE SPINNING.** On slippery surfaces such as snow, mud, ice, etc., do not spin tires in excess of 35 mph (55 kph), as indicated on the speedometer. Personal injury and severe damage may result from excessive wheel spinning, including tire disintegration or axle failure.

#### YOUR LEGAL RIGHTS

THIS LIMITED WARRANTY IS THE ONLY EXPRESS WARRANTY GIVEN BY KETER. KETER DOES NOT MAKE ANY OTHER EXPRESS WARRANTY, INCLUDING WITHOUT LIMITATION THE IMPLIED WARRANTIES OF MERCHANTABILITY OR FITNESS FOR A PARTICULAR PURPOSE (WHICH ARE EXPRESSLY DISCLAIMED). KETER DOES NOT AUTHORIZE ANY OTHER PERSON, INCLUDING AUTHORIZED KETER DEALERS OR VEHICLE DEALERS, TO CHANGE THIS WARRANTY OR CREATE ANY OTHER OBLIGATION IN CONNECTION WITH KETER TIRES. THE RIGHTS AND REMEDIES AVAILABLE ARE LIMITED TO THOSE RIGHTS AND REMEDIES STATED IN THIS LIMITED WARRANTY. ALL OTHER REMEDIES ARE EXCLUDED. IN NO EVENT SHALL KETER BE RESPONSIBLE FOR ANY CONSEQUENTIAL, INCIDENTAL OR SPECIAL DAMAGE(S) IN CONNECTION WITH A KETER TIRE, WHETHER FOR BREACH OF THIS LIMITED WARRANTY, OTHER CONTRACT BREACH, NEGLIGENCE OR OTHER TORT, OR ANY STRICT LIABILITY THEORY.

- Some states do not allow the exclusion or limitation of incidental or consequential damages, so the above exclusion may not apply to you. This warranty gives you specific legal rights and you may also have other rights which vary from state to state.





99 E Main St. Suite 200 | Franklin, TN 37064 | 615.535.1358 | [customerservice@ketertireusa.com](mailto:customerservice@ketertireusa.com)

[KeterTireUSA.com](http://KeterTireUSA.com)

DRIVE THE NEW WORLD!